

An Effortless Way to **Gain** **Deeper Insights**

Mobile health sensors and wearable devices collect valuable insights into treatment effects beyond assessments performed during routine clinic visits. These devices collect objective data such as activity, sleep, lung function, blood oxygen, blood glucose, and inhaler usage without increasing site or participant burdens.



Why include Sensors & Wearables



Monitor patient safety

You'll gain access to data in near real-time, allowing you to closely observe patients



Understand real-world behavior

The devices track objective measurements of real-world functioning such as activity levels and sleep records



Collect data at more frequent intervals

Sensors are designed to integrate into daily life, meaning you can collect accurate data more often



Conduct a virtual study

Data is available on our cloudbased platform, so you can monitor patients remotely

Why choose Signant SmartSignals?

- 1** With SmartSignals, you get so much more than advanced technology. You'll gain access to Signant's team of subject matter experts and data analysts who can help you navigate common trial complexities.
- 2** Our integrated wearables and mobile sensors collect objective data for endpoint studies without burdening the patients or sites.

More reasons to choose Signant SmartSignals eCOA Sensors & Wearables



SCIENTIFIC EXPERTISE

Our team helps you select and implement the right device for your study



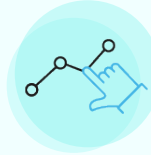
REAL-TIME INSIGHTS

Access new, real-world endpoints faster for improved patient oversight



INDUSTRY-LEADING SUPPORT

We'll help you with everything from device logistics to site and patient training



SITE APPROVAL

Secondary endpoint data is streamed directly to study teams for review



FLEXIBLE INTEGRATION

Our devices integrate with Signant and third-party platforms alike



REGULATORY COMPLIANCE

Signant's active involvement in industry forums and regulatory groups ensures compliant sensors & wearables use

Our solutions are better together

Unlock the full value of Sensors & Wearables



eCOA



eConsent



Patient Engagement



Telemedicine

Explore the Full Suite

WHO IS SIGNANT HEALTH?

Signant Health is the evidence generation company. We are focused on leveraging software, deep therapeutic and scientific knowledge, and operational expertise to consistently capture, aggregate, and reveal quality evidence for clinical studies across traditional, virtual, and hybrid trial models. For more than 25 years, over 600 sponsors and CROs of all sizes – including all Top 20 pharma – have trusted Signant solutions for remote and site-based eCOA, EDC, eConsent, RTSM, supply chain management, and data quality analytics. Learn more at www.signanthealth.com.